

This north London house has been given a bright, contemporary interior that combines sleek design with durable materials to create practical and adaptable home for a family with two young children

Words REBECCA HOH Photography SARAH HOGAN

KEEP IT IN THE FAMILY



Niloufar Lamakan of Nila Design and Nadi Jahangiri of Scala Architects have collaborated many times in the past but were nervous about this job — Jahangiri's own home in Islington.

'It was all very serendipitous,' says Lamakan. 'I saw an advert for the house and texted Jahangiri because I thought it was right for him, his wife and two young children. They put in a sealed bid the same day, won it and, a year or so later, asked me to design the interior.'

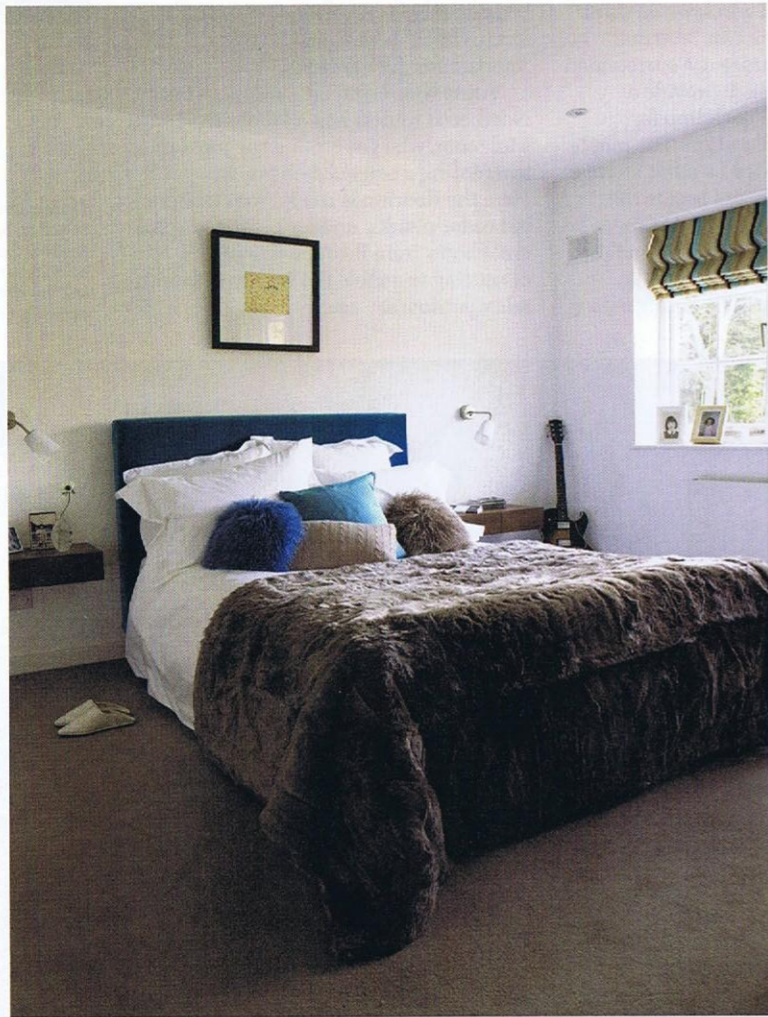
The first job was to change the layout to accommodate the family of four. A new staircase gives access to a third bedroom, the single bathroom has been turned into an ensuite and another bathroom converted from a box room. A rear extension transforms the compact kitchen into a family area that includes a TV room and dining space. This area can be shut away from the more formal reception room by closing the folding timber-and-glass doors by Crown Doors.

The interior has been rejuvenated with a cream-and-mocha palette with touches of colour, such as the blue glass BoConcept dining table and a recess wallpapered in Lamakan's own design.

Hard-wearing surfaces — such as the kitchen's zodiac quartz worktops and walnut laminate cabinetry — have been used throughout along with wipe-clean furniture for practicality. Lamakan gave the girls (aged two and five) bright and cheerful bedrooms and a practical bathroom with pink touches that can easily be altered as their tastes change. The matt porcelain tiles are sealed for easy maintenance, while the floor tiles are a mocha shade to hide footprints.

The adults' bathroom is 'grown up and sexy' with an architectural look. Dark wall tiles, a walk-in shower and walnut under-basin storage combine to give the space a hotel-room feel.

Lamakan admits that working with an architect colleague added an extra dimension to this project. 'We were nervous but it all worked out,' she says. 'Weeks after they had moved in, Nadi said they kept discovering fantastic features they had not noticed before.'



SLEEK AND CHIC
Main pic: the furniture and colour palette are sleek and simple in the living room, lifted by the warm wood of the walnut coffee table and engineered oak flooring from the Solid Wood Flooring Company

SUBTLE SHADES
Far left: the master bedroom has wool-blend Victoria carpet from Islington Flooring, its mushroom shade blends into the slate-coloured porcelain floor tiles in the ensuite bathroom

FIND YOUR NICHE
Above far left: a shelving niche in the dining area is painted blue and illuminated by small LEDs to create a streamlined display in keeping with the rest of the kitchen

EARN YOUR STRIPES
Above left: the wallpaper in the kitchen recess was designed by Lamakan and made by IE Wallpaper. It brings together all the colours used in the room. The walnut cabinetry is from Pronorm

SHOWER POWER
Above: the client asked for an unfussy, architectural look in the bathroom, which has a showerhead and a valve from Hansgrohe and a minimalist screen from Preedy Glass

Contacts » **Crown Doors** www.crowndoors.co.uk » **Hansgrohe** www.hansgrohe.co.uk » **IE Wallpaper** www.interiors-europe.co.uk » **Islington Flooring** www.theflooringgroup.co.uk » **Nila Design** www.niladesign.co.uk » **Preedy Glass** www.preedyglass.com » **Pronorm** www.pronorm.de » **Scala Architects** www.scalaarchitects.com » **The Solid Wood Flooring Company** www.theolidwoodflooringcompany.com » **Victoria Carpets** www.victoriacarpets.com