

# Salvaged Wood Flooring

At The Solid Wood Flooring Company, we believe a floor should be more than just functional — it should be a statement of character, craftsmanship, and conscience.

Our reclaimed wood collections are crafted from the finest hardwoods, rich in history and unique in appearance. Each piece tells a story, offering unmatched depth of colour and a naturally textured surface that modern materials simply can't replicate.

Every log we recover is hand-selected, expertly milled, and carefully air-dried before being kiln-dried to a precise 6–8% moisture content. This meticulous process ensures not only beauty, but long-lasting stability and performance.

For those seeking true design continuity, The Solid Wood Flooring Company also offers bespoke trims and solid wood doors, perfectly matched to your flooring to deliver a seamless, high-end finish throughout your space.

**Because real reclaimed wood is unique in every aspect we will only make to order. Unlike our normal engineered wood flooring it is not a stock item.**

Samples must be paid for.



**In addition to our flooring and joinery solutions, The Solid Wood Flooring Company offers expertly crafted bespoke stair treads, made from the same reclaimed old-growth hardwood. Each tread is individually glued, sanded, and precision-cut to your exact design specifications. Whether you prefer a classic bullnose, a sleek square edge, or something more bespoke, we offer a variety of edge profiles to suit your style. The result is a beautifully cohesive staircase that complements your flooring and elevates the overall aesthetic of your home.**



# Reclaimed Flooring Specifications - Custom

<b>SOLID FLOORING</b>		<b>ENGINEERED FLOORING</b>
3" to 12"	<b>WIDTHS</b>	3" to 11"
2' to 12'	<b>LENGTHS</b>	2' to 12'
3/4", 5/8", 1/2" (3/8", 11/16" available)	<b>THICKNESS</b>	5/8", (11/16", 3/4" available)
prefinished or unfinished	<b>FINISH</b>	prefinished or unfinished
wire-brushing, eased/beveled edge, handscraping, same width planks	<b>OPTIONS</b>	wire-brushing, eased/beveled edge, handscraping, same width planks
tongue & groove, Square or Shiplap recessed backs, precision milled	<b>PROFILE</b>	4mm wear layer, 8-ply Baltic Birch, tongue & groove
commercial & residential	<b>APPLICATION</b>	commercial & residential

# Stair Treads and Parts

**We'll glue, sand and cut to size to your design specifications, and shape your treads with a variety of edges.**



# Wood Tops

Choose reclaimed countertops, table tops, and bar tops — ideal for bringing warmth and character to kitchens, dining areas, and commercial spaces. Using the same premium reclaimed wood as our flooring, each surface is custom-made to your dimensions and design requirements. These pieces feature rich patinas and unique grain patterns that only time can create. Whether for a rustic farmhouse kitchen or a contemporary hospitality setting, our reclaimed wood surfaces offer timeless beauty with sustainable integrity.

---

<b>Thickness</b>	1 ½”
<b>Edges</b>	Eased or Milled Profile
<b>Finish</b>	UV Oil



# Specs of Wood

## SOLID

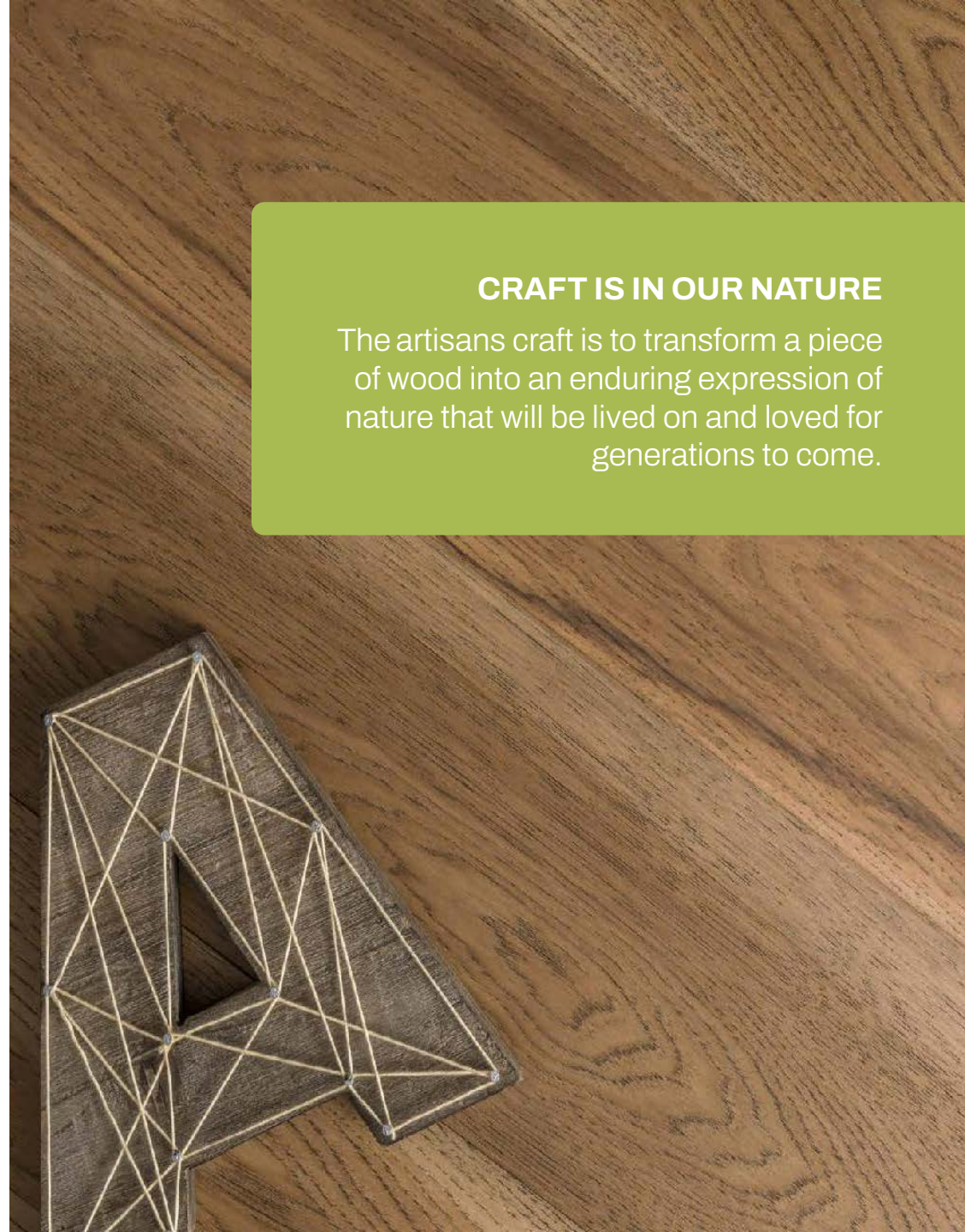
- Authentic
- Timeless
- Durable
- Expand and contracts which gives it a very natural look and feel
- Can be sanded and stained multiple times

## ENGINEERED

- Highly stable core that is less likely to expand or contract
- Great option in spaces that are subject to moisture or over floor heating
- Can be sanded and stained multiple times

## CRAFT IS IN OUR NATURE

The artisans craft is to transform a piece of wood into an enduring expression of nature that will be lived on and loved for generations to come.



# Reclaimed Oak

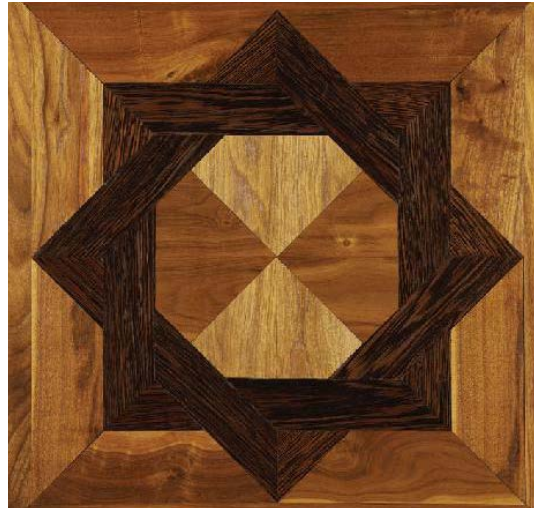
Reclaimed oak is prized for its strength, rich tones, and enduring beauty. The natural ageing process deepens the oak's character, resulting in stunning colour variation and a distinctive patina that simply cannot be replicated in new wood.

Once reclaimed, our oak is meticulously hand-milled and prepared to meet the highest standards of craftsmanship. Whether used for flooring, stair treads, or bespoke surfaces, reclaimed oak offers aesthetic impact and long-lasting performance. Its inherent stability makes it ideal for both traditional and contemporary spaces, while its provenance ensures every installation is both sustainable and entirely one of a kind.





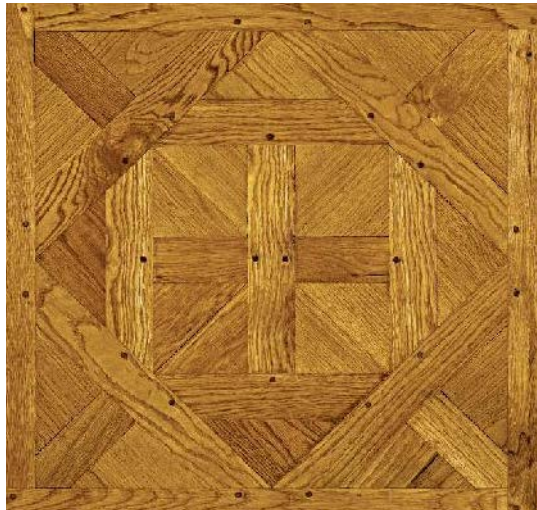
**SWFC-RECLAIM - K01**



**SWFC-RECLAIM - K02**



**SWFC-RECLAIM - K03**



**SWFC-RECLAIM - K04**



**SWFC-RECLAIM - K05**



**SWFC-RECLAIM - K06**



**SWFC-RECLAIM - K07**



**SWFC-RECLAIM - K09**





**SWFC-RECLAIM - K11**



**SWFC-RECLAIM - K10**





**SWFC-RECLAIM - K08**



**SWFC-RECLAIM - K20**



**SWFC-RECLAIM - K12**



**SWFC-RECLAIM - K13**



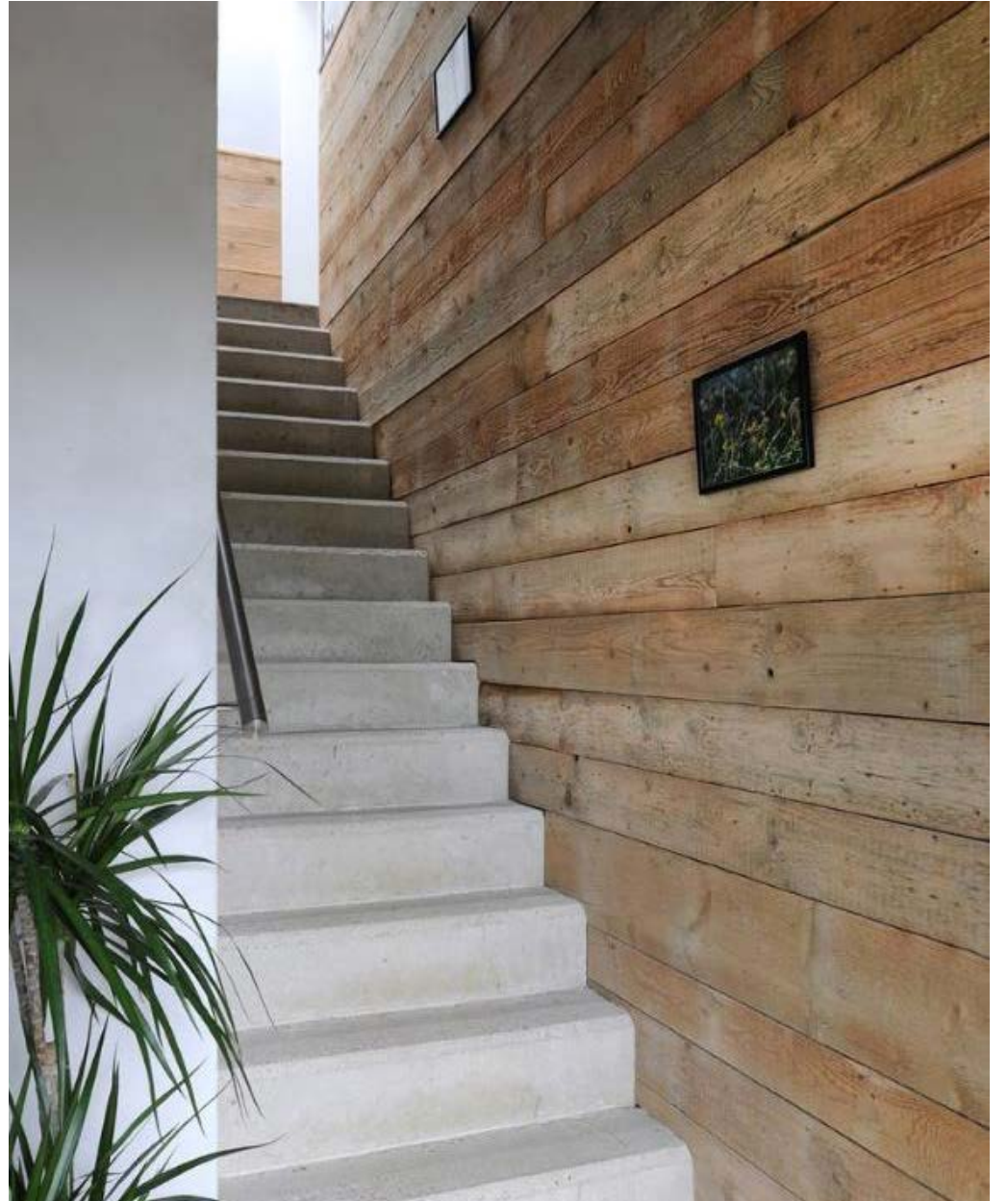
**SWFC-RECLAIM - K14**

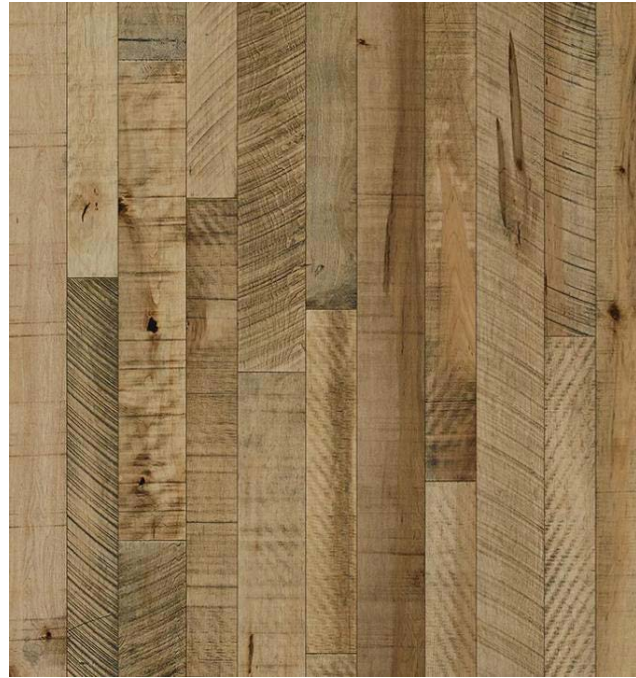


**SWFC-RECLAIM - K15**



**SWFC-RECLAIM - K18**





**SWFC-RECLAIM - K14**





**SWFC-RECLAIM - K31**



**SWFC-RECLAIM - K32**





**SWFC-RECLAIM - K33**



**SWFC-RECLAIM - K34**





**SWFC-RECLAIM - K35**





**SWFC-RECLAIM - K38**



**SWFC-RECLAIM - K39**



**SWFC-RECLAIM - K40**



05-10-2017 / 1414



**SWFC-RECLAIM - K21**

# PART SPECIFIC DATA

**SPECIES:** Antique Reclaimed Oak (Mix of Red/White Oak)

**GRADE:** Rustic

**FINISH:** Matte Polyurethane/Unfinished

**Janka Hardness (ASTM D 1037):** 1,325

**Flame Spread Class Rating (ASTM E84):** Class III (C)

**Standard Millwork:** Tongue & Groove, Endmatched

NB-K- 21 is a mix of reclaimed red & white oak creating a pleasing variation of colors. Expect a warm palette of colors, with dense & varying grain patterns. Typical character marks include mineral staining, color changes, weathering, checking, nail holes, and knots.

**Available SOLID or ENGINEERED.**



**SWFC-RECLAIM - K22**



**SWFC-RECLAIM - K23**



**SWFC-RECLAIM - K24**



**SWFC-RECLAIM - K25**



**SWFC-RECLAIM - K26**

**SPECIES:** Reclaimed OAK

**GRADE:** Rustic

**FINISH:** STAIN/SEALER (NOTE: REED IS UNFINISHED)

**Janka Hardness (ASTM D 1037):** 500

**Flame Spread Class Rating (ASTM E84):** Class II (B)

**Flame Spread Index (ASTM E84):** 35

**Smoke Developed Index (ASTM E84):** 175

**Standard Milling:** S3S

**STANDARD DIMENSIONS,  
MILLING & EDGE DETAIL (SOLID):**

**Thickness:** +/- 7/8"

**Width:** 7"

**Random Lengths:** 4'-12'

**Edges:** Square



**SWFC-RECLAIM - K27**

**Thickness:** +/- 1/2"

**Random Widths:** 3-3/4", 4-1/4", 5-1/4", 6-1/4" random widths

**Random Lengths:** 4'-12'

**Edges:** Square

**Milling:** S3S

**APPLICATIONS:** NB-K-27 is for INTERIOR and EXTERIOR applications - walls, ceilings, and millwork (not recommended for flooring)



**SWFC-RECLAIM - K28**

**Thickness:** +/- 1/2"

**Random Widths:** 3-3/4", 4-1/4", 5-1/4", 6-1/4" random widths

**Random Lengths:** 4'-12'

**Edges:** Square

**Milling:** S3S

**APPLICATIONS:** NB-K-28 is for INTERIOR applications - walls, ceilings, and millwork (not recommended for flooring)



**SWFC-RECLAIM - K29**

**Thickness:** +/- 1/2"

**Random Widths:** 3-3/4", 4-1/4", 5-1/4", 6-1/4" random widths

**Random Lengths:** 4'-12'

**Edges:** Square

**Milling:** S3S

**APPLICATIONS:** NB-K-29 is for INTERIOR applications - walls, ceilings, and millwork (not recommended for flooring)



**SWFC-RECLAIM - K30**

**SOLID**

**Thickness:** 3/4"

**Width:** 5"

**Random Lengths:** 2'-10'

**Edges:** Microbevel

**ENGINEERED**

5/8" (4 mm wear layer)

5"

2'-10'

Microbevel

**NB-K-30 is for INTERIOR and EXTERIOR applications** - walls, ceilings, and millwork (not recommended for flooring)

## Reclaimed oak flooring



**SWFC-RECLAIM - K19**



# Engineered Oak

Engineered oak combines the timeless appeal of natural wood with enhanced performance and stability. Our engineered oak products are designed to withstand the challenges of everyday life and offer excellent moisture resistance and dimensional stability. Engineered oak won't warp or crack with fluctuations in humidity, making it a perfect choice for kitchens, basements, and underfloor heating systems, as well as for use in both dry and humid environments.

In addition to its practicality, engineered oak is an environmentally responsible option. Crafted using a real oak top layer and a high-quality multi-layered core, it requires less timber than traditional planks while still delivering the same luxurious look and feel. With minimal use of adhesives and finishes, it emits virtually no odour, creating a healthier indoor environment.





**SWFC-RECLAIM - T01**



**SWFC-RECLAIM - T04**



**SWFC-RECLAIM - T06**



**SWFC-RECLAIM - T07**



**SWFC-RECLAIM - T08**



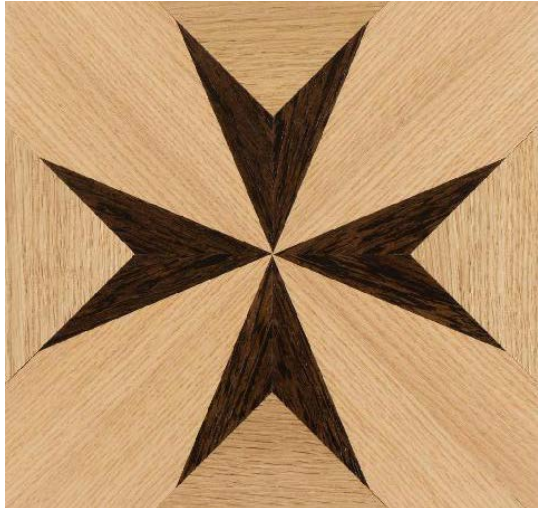
**SWFC-RECLAIM - T09**



**SWFC-RECLAIM - T10**



**SWFC-RECLAIM - T11**

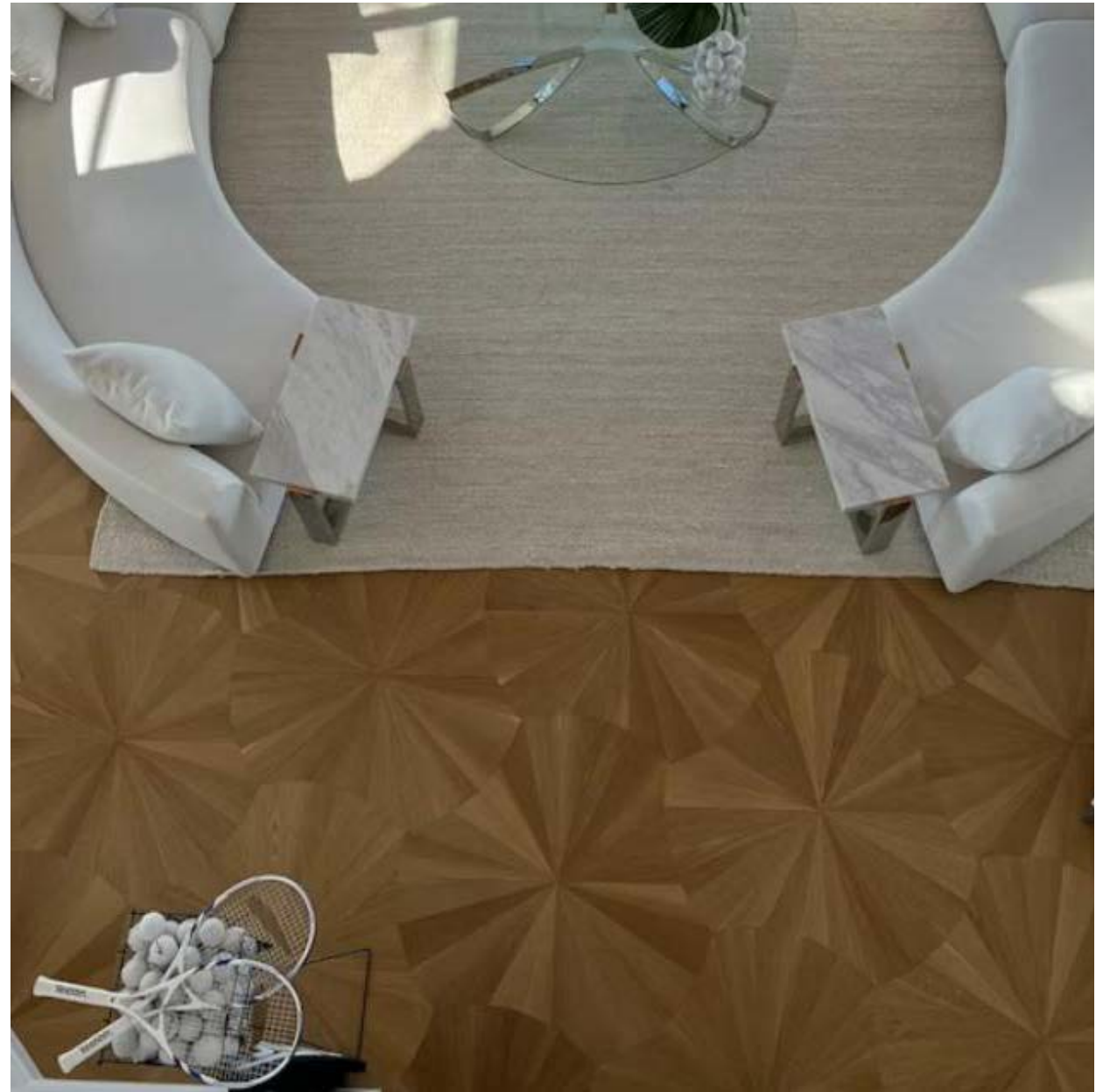


**SWFC-RECLAIM - T12**





**SWFC-RECLAIM - T13**





**SWFC-RECLAIM - T14**





**SWFC-RECLAIM - T16**





**SWFC-RECLAIM - T18**





**SWFC-RECLAIM - T19**



**SWFC-RECLAIM - T20**



**SWFC-RECLAIM - T21**



**SWFC-RECLAIM - T22**



**SWFC-RECLAIM - T23**



**SWFC-RECLAIM - T24**



**SWFC-RECLAIM - T25**



**SWFC-RECLAIM - T26**

## LAMINATE FLOORING



**SWFC-RECLAIM - L10**



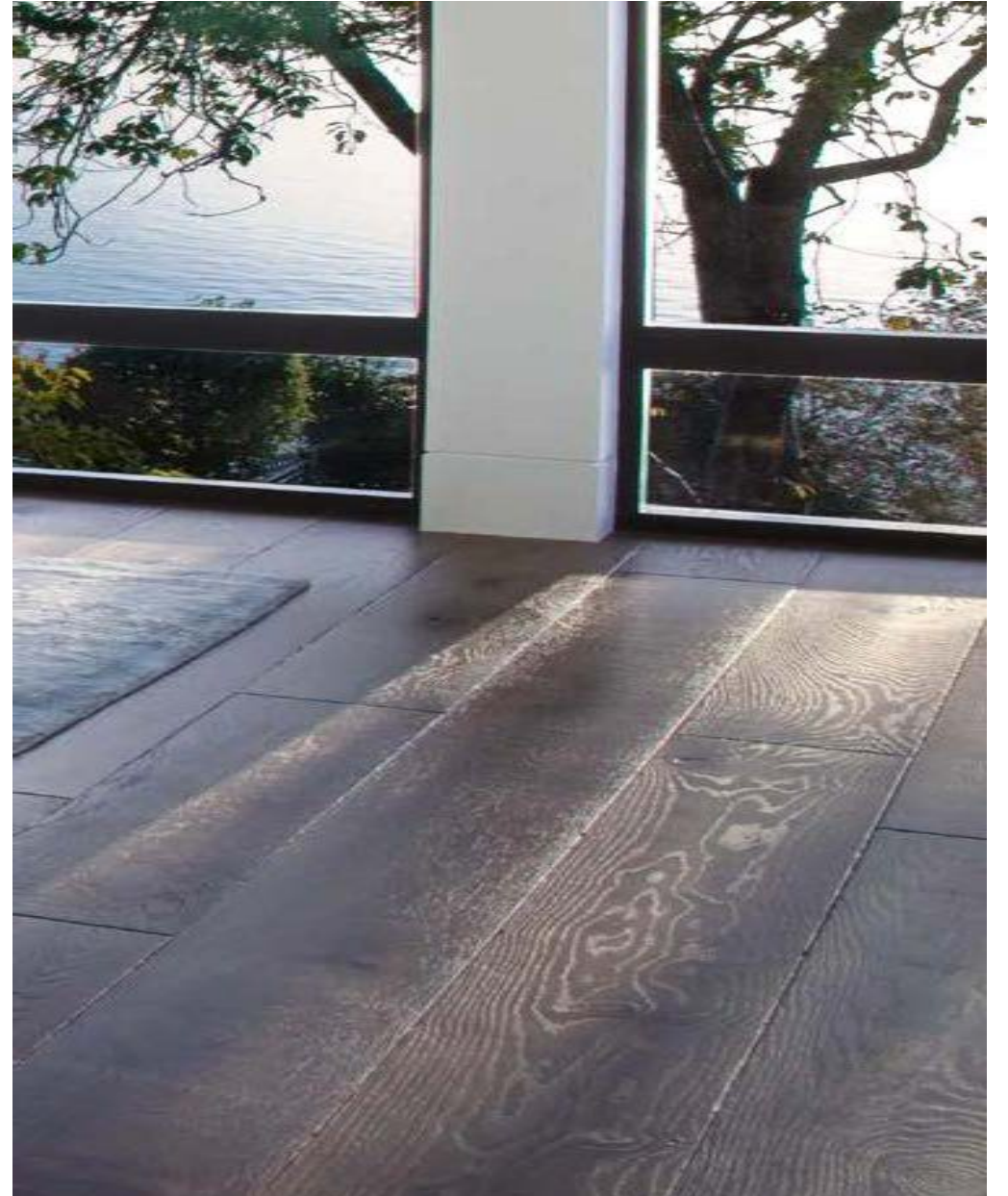
**SWFC-RECLAIM - L11**



**SWFC-RECLAIM - L12**



**SWFC-RECLAIM - L13**





**SWFC-RECLAIM - L16**



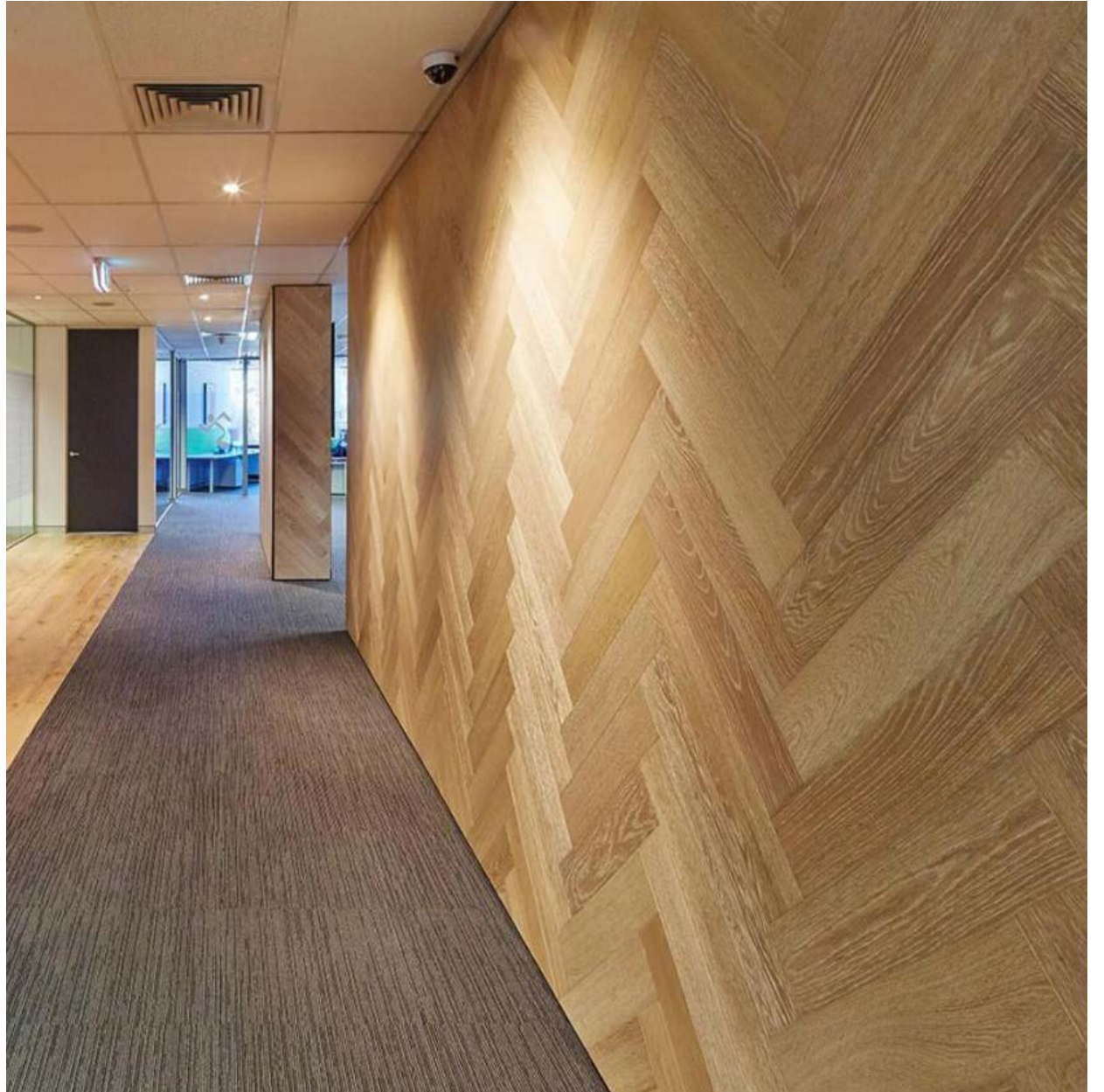
**SWFC-RECLAIM - L17**



**SWFC-RECLAIM - L18**



**SWFC-RECLAIM - L09**



# Reclaimed Oak vs Engineered Oak

Choosing between reclaimed oak and engineered oak depends on your design vision, practical needs, and environmental conditions. Reclaimed oak offers unmatched character and provenance, with each board steeped in history with rich textures and colouring. It's ideal for heritage properties, statement interiors, or anywhere you want to showcase the beauty of timeworn timber. Its solid composition makes it a long-term investment in authenticity and craftsmanship.

Engineered oak, on the other hand, provides the beauty of real wood with added resilience. Designed to perform in modern environments, it maintains its stability without compromising on aesthetics. With its layered construction and eco-conscious design, it's perfect for contemporary homes or high-traffic spaces where practicality and elegance must go hand in hand. Both options offer timeless appeal — the right choice simply depends on how you live and the story you want your floor to tell.



# New Wood Flooring

As a custom manufacturer of wood flooring we don't just produce the ordinary.

When it comes to specifications, we go way beyond. Our wide plank flooring comes in random widths up to 8 inches and lengths up to 12 feet.

Custom would be ordering individual widths and often only cost pennys more.

Here are some desirable local woods below, but we can use any exotic wood, and also, most new & antique floors in either solid or 3/4" engineered.

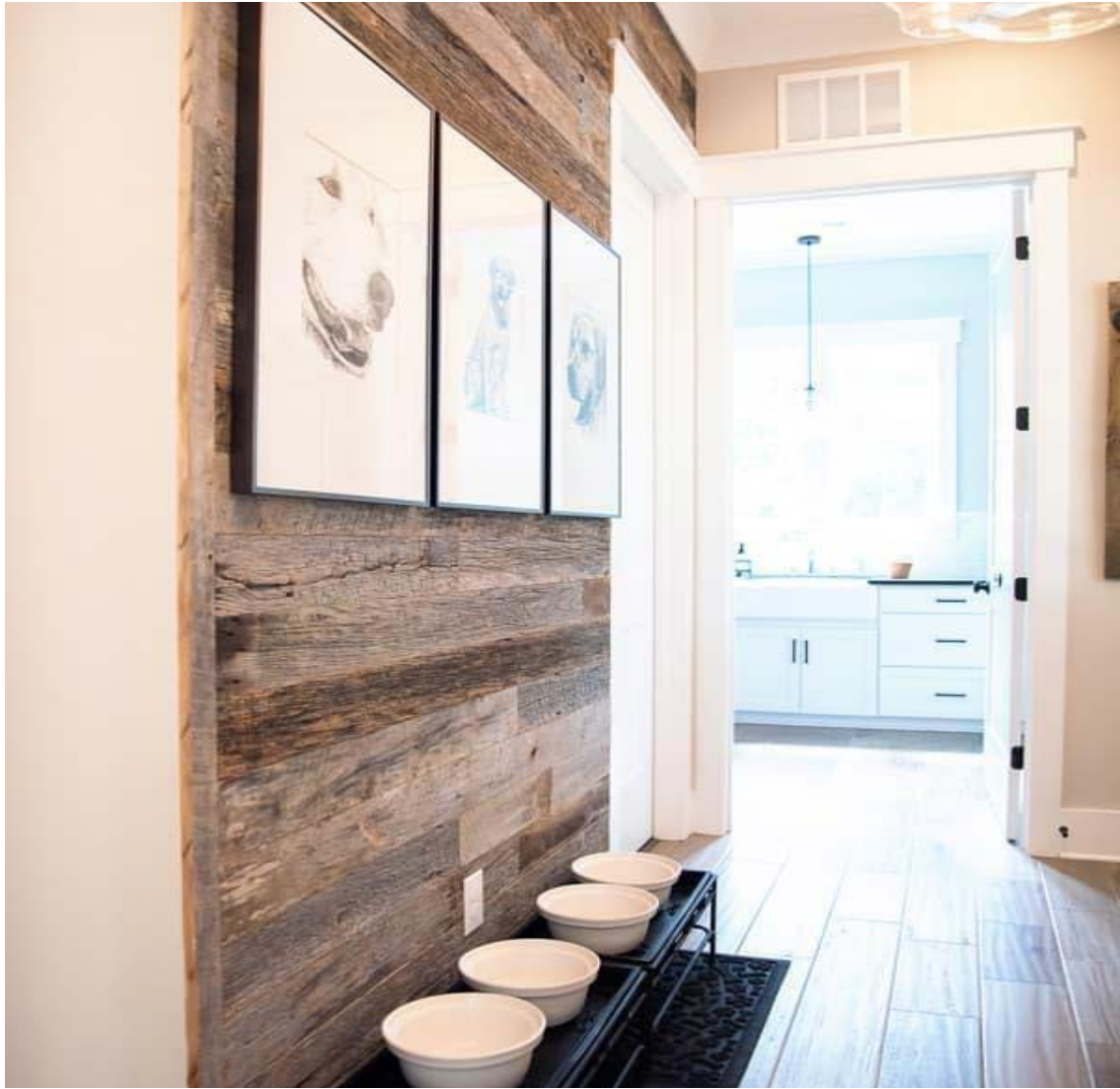




**Floorings**



**Stair Treads**

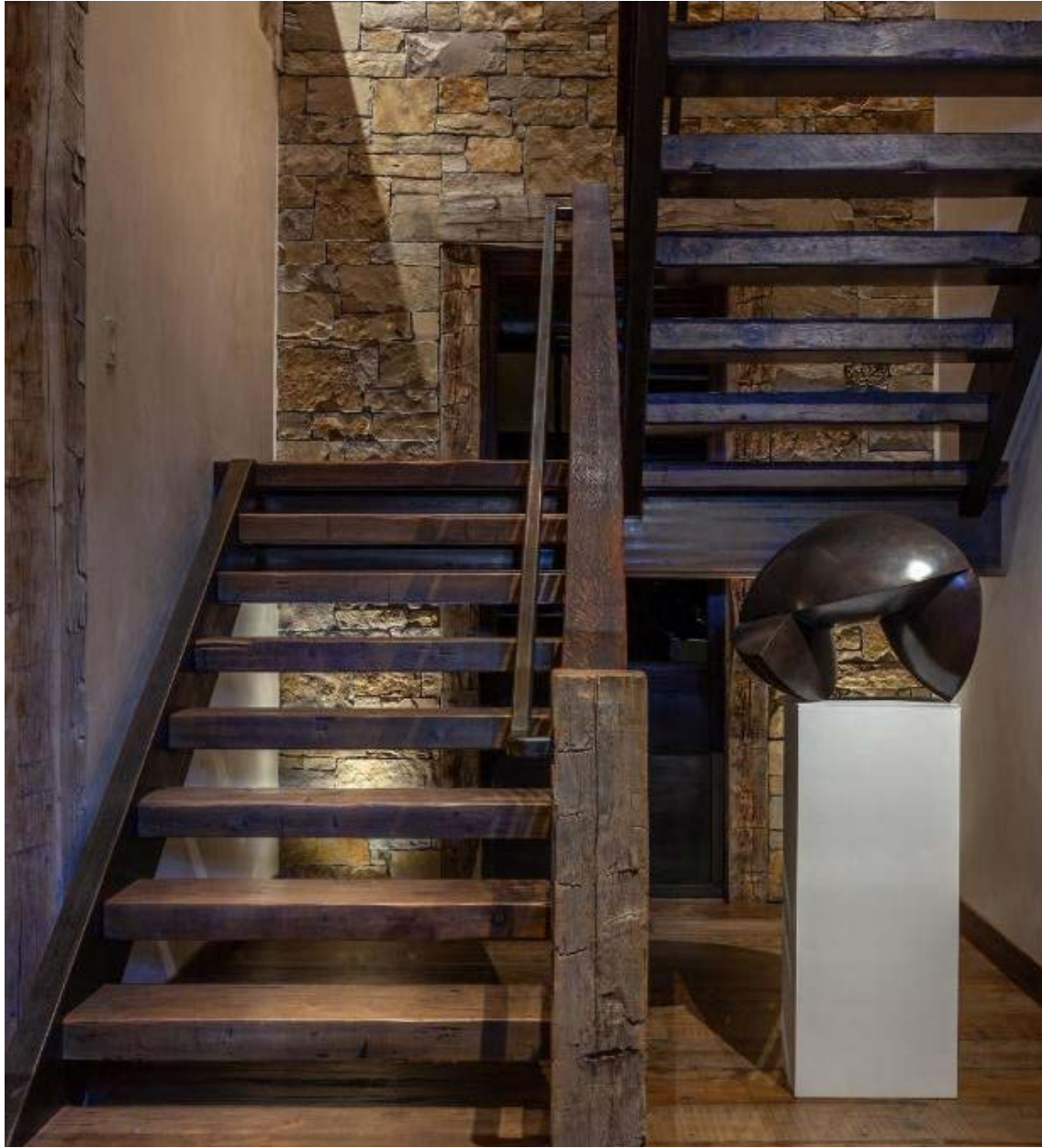


**Wall Art**



**Ceilings**

















The  
**Solid Wood**  
Flooring Company

# Contact Us

 01666 504015

 [info@thesolidwoodflooringcompany.com](mailto:info@thesolidwoodflooringcompany.com)

 Unit 1 Helena Court  
Gloucestershire  
GL8 8JN